



**It's a fact . . .**

# Chlor-XTRA™ Improves Outcomes!

Clinically proven to:

- Work **4+X FASTER** than ChlorCid®\*
- Dissolve **MORE Tissue**
- Improve Disinfection
- Reduce Post-treatment Complications

## Chlor-XTRA™

For improved contact, improved digestion, decreased surface tension, and increased lubricity.

- 2.5 times more wetting ability\*\*
- 2.6 times more digestive\*\*
- Much more powerful oxidizing agent

\*\*In comparison to sodium hypochlorite



Multiple Patents Pending

Improve your outcomes with our recommended Irrigation Regimen:  
**5 Easy Steps = Superior Results!**



## Chlor-XTRA™ vs ChlorCid®\*

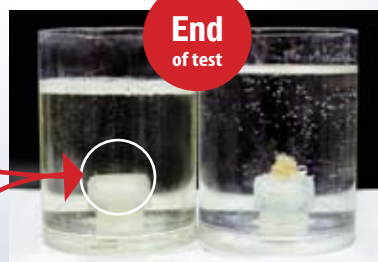
Effectiveness of pulp and tissue dissolution



**Start of the test:** Equal tissue sample is based on weight (0.125g / 125mg). Each sample was in 30ml of solution (for 4.166mg of tissue per ml of solution).



ChlorCid® is a registered trademark of Ultradent®



**After 45 minutes Chlor-Xtra™ has totally dissolved the tissue.**

The sample tissue in the ChlorCid® container will not be dissolved for another **THREE** hours.

### COMPARATIVE ANALYSIS

	Chlor-XTRA™	ChlorCid®
Free Chlorine (%)	~6	2.3
Surface Tension (dynes / cm)	~29	45.8
Dissolution Rate (mg / min)	2.3	0.43
Cost	<b>\$0.12/ml</b>	\$0.37/ml